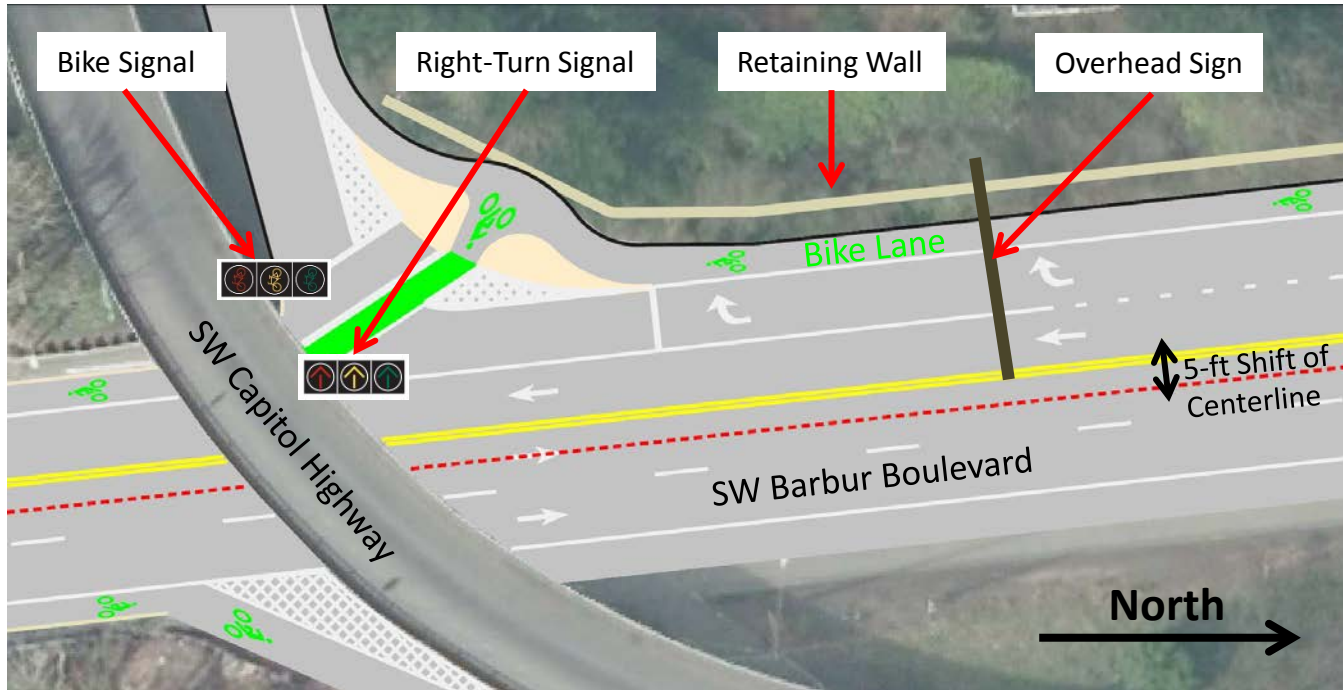


Barbur Road Safety Audit

- Reduce One Southbound Lane on SW Barbur Blvd over Newbury and Vermont Bridges to Provide Bike Lanes
- Add Bicycle Signal at SW Capitol Highway

Project Description: Move the centerline to the west on SW Barbur Boulevard to remove one southbound through lane to provide bicycle lanes on the Newbury and Vermont Bridges. The transition will start at the curve 1500-ft north of SW Capitol Hwy and end 800-ft south of the Vermont Bridge. Add a traffic signal at SW Capitol Highway to prevent conflict between right-turning motor vehicles and through bicycles. Signs warn motor vehicles that the through lane becomes a right-turn only lane.

SW Barbur Blvd at SW Capitol Hwy



Project Location



Project Cost Estimate

Design Element	Total Costs
Pavement to Remove Ghost Striping for Safety	\$2 million
To Cut into Hill for Retaining Wall	\$1 million
Traffic Signal, Striping, & Overhead Sign	\$1 million
Total Project Cost	\$4 million

Funding is not identified.
Subject to funding availability.